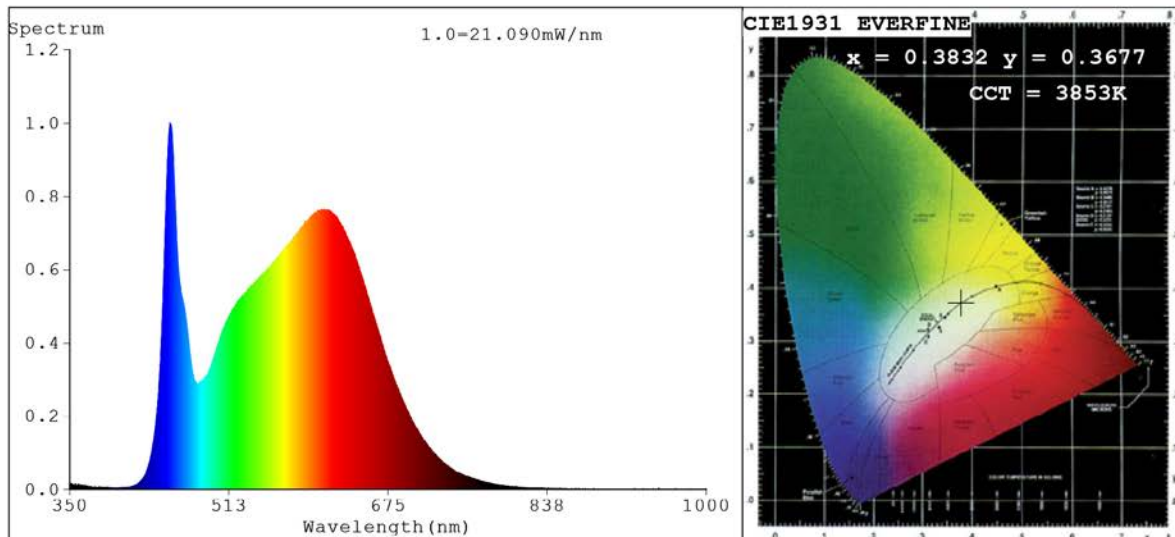


Spectrum Test Report



Color Parameters:

Chromaticity Coordinate: $x=0.3832$ $y=0.3677$ $u'=0.2306$ $v'=0.4979$
 CCT=3853K (Duv=-0.0051) Dominant WL: $\lambda_d = 582.7\text{nm}$ Purity=25.3%
 Ratio: R=20.6% G=75.2% B=4.2%; Peak WL: $\lambda_p = 452.3\text{nm}$ FWHM=21.7nm
 Render Index: Ra=92.4 CRI=89.3 TM30: Rf=88 Rg=100 Lav=578.4nm
 R1 =94 R2 =97 R3 =97 R4 =91 R5 =93 R6 =93 R7 =91
 R8 =83 R9 =61 R10=93 R11=92 R12=72 R13=96 R14=99 R15=92

Photo Parameters:

Flux = 934.8 lm Eff. : 77.92 lm/W Fe = 3.170 W

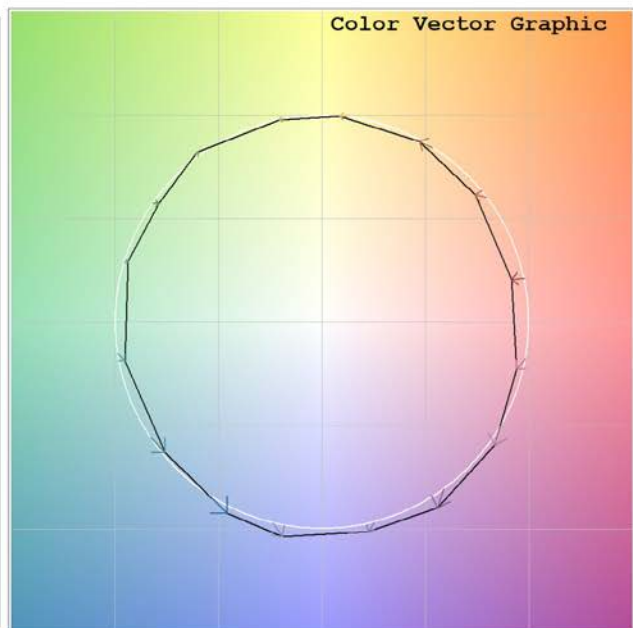
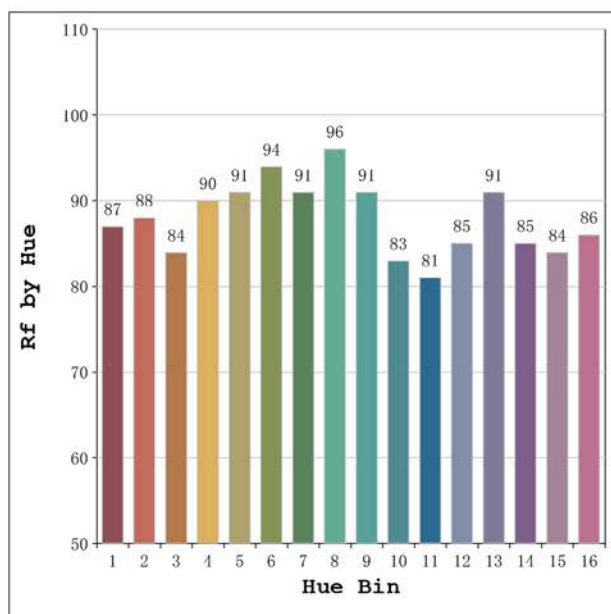
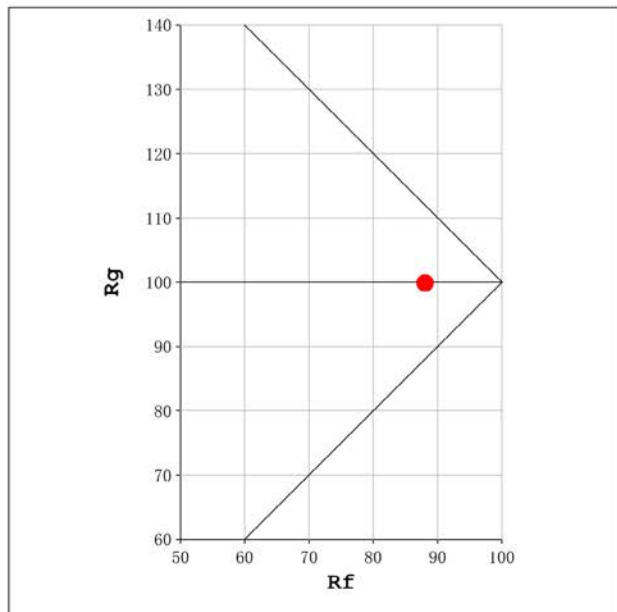
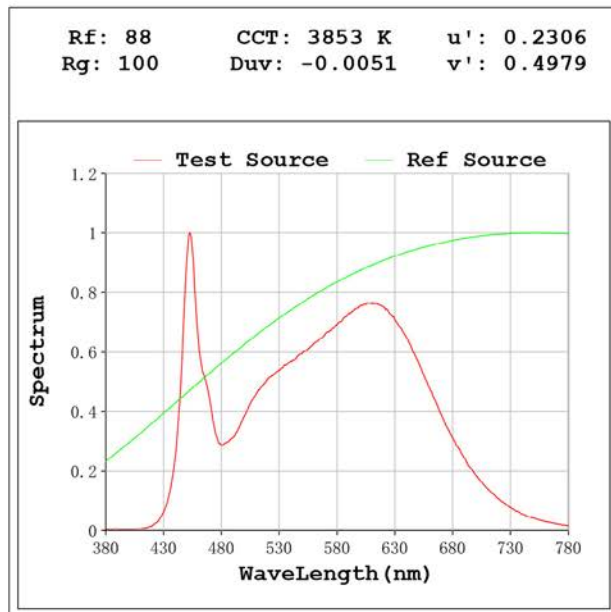
Electrical parameters:

V = 23.998 V I = 0.4999 A P = 12.00 W PF = 1.000

Status: Integral T = 1359 ms Ip = 41284 (63%)

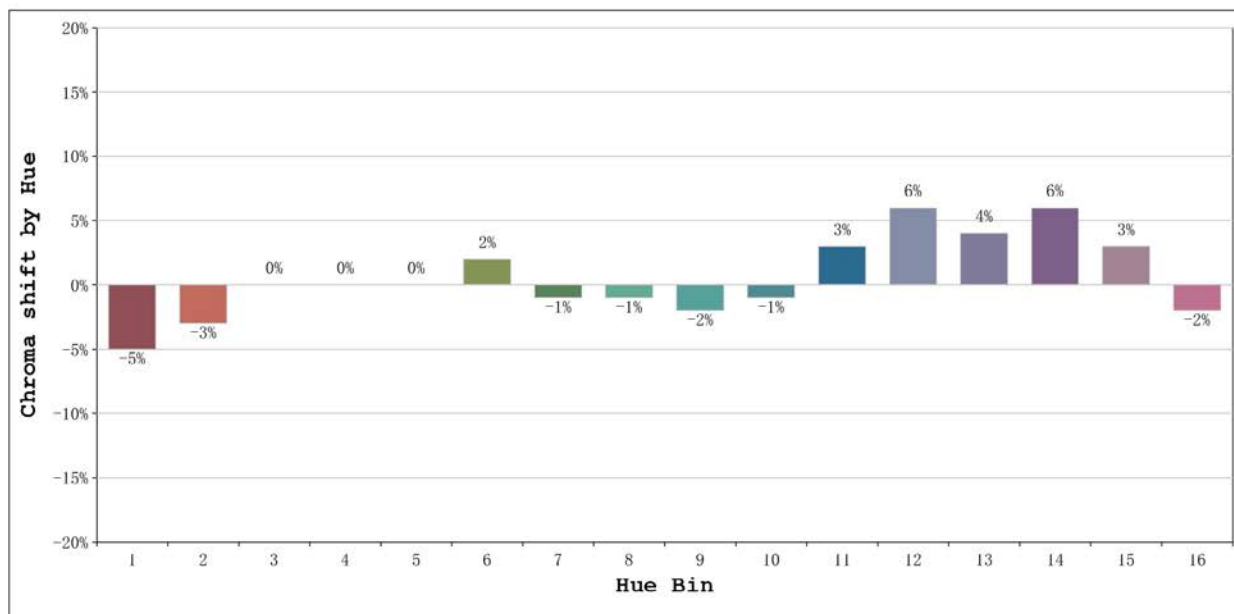
Model: Ecoled Neón 3D 4000K
 Tester: Sergio Carneros
 Temperature: 27Deg
 Manufacturer: Luz Negra S.L.

Number: 10.285
 Date: 2024-11-21 10:02:03
 Humidity: 35%
 Remarks: 100cm de Neón



Model:Ecoled Neón 3D 4000K
 Tester:Sergio Carneros
 Temperature:27Deg
 Manufacturer:Luz Negra S.L.

Number:10.285
 Date:2024-11-21 10:02:03
 Humidity:35%
 Remarks:100cm de Neón



			Graphic shift(%)	
Hue Bin	Hue Angle	Rf	Chroma	Hue
1	0.0° - 22.5°	87	-5	1
2	22.5° - 45.0°	88	-3	4
3	45.0° - 67.5°	84	0	7
4	67.5° - 90.0°	90	0	4
5	90.0° - 112.5°	91	0	2
6	112.5° - 135.0°	94	2	0
7	135.0° - 157.5°	91	-1	-1
8	157.5° - 180.0°	96	-1	0
9	180.0° - 202.5°	91	-2	4
10	202.5° - 225.0°	83	-1	10
11	225.0° - 247.5°	81	3	12
12	247.5° - 270.0°	85	6	6
13	270.0° - 292.5°	91	4	-3
14	292.5° - 315.0°	85	6	-7
15	315.0° - 337.5°	84	3	-8
16	337.5° - 360.0°	86	-2	-5

Model:Ecoled Neón 3D 4000K
 Tester:Sergio Carneros
 Temperature:27Deg
 Manufacturer:Luz Negra S.L.

Number:10.285
 Date:2024-11-21 10:02:03
 Humidity:35%
 Remarks:100cm de Neón